



aQysta

Innovating for Impact

Barsha Pump



FAQs 2018

General

Please find below a list of the most frequently asked questions. Should you require any further information, please do not hesitate to contact us.

Product

* Are there different models/variants of the pump?

aQysta is currently selling a total of six different configurations of the Barsha pump:

Canal Version

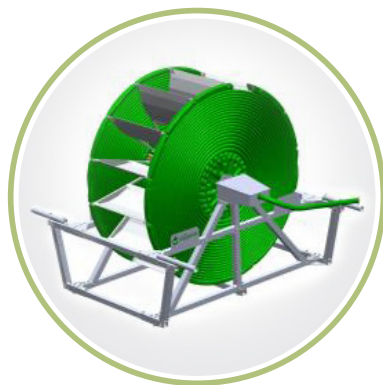
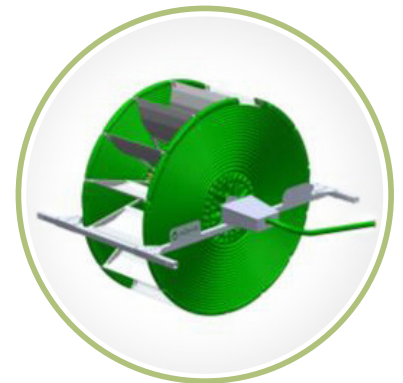
- Includes basic frame
- Optimal for narrow canals: Frame to be mounted on top of canal side walls

Canal Version – Narrow

- Rotating body with 550mm paddles
- For fast flowing canals with a width of 650-900mm

Canal – Wide

- Rotating body with 750mm paddles
- Ideal for slow canals with a width of 850-1100mm



Shallow River Version

- Includes stand-alone frame
- Optimal for shallow rivers/ canals in which the pump does not need to float

Shallow River Version – Narrow

- Rotating body with 550mm paddles
- For shallow canals/ rivers with a width ≥ 1450 mm and flow speed ~ 1.3 m/s

Shallow River Version – Wide

- Rotating body with 750mm paddles
- For shallow canals/ rivers with a width ≥ 1650 mm and flow speed ~ 1.1 m/s

Deep River

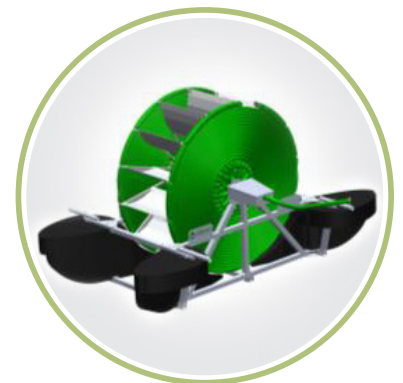
- Includes stand-alone frame with integrated accelerating float
- Optimal for deep rivers/ canals
- Optimal for shallow rivers/ canals with changing water level

Deep River Version – Narrow

- Rotating body with 550mm paddles
- For canals/ rivers with a width ≥ 1450 mm and flow speed ~ 1.3 m/s

Deep River Version – Wide

- Rotating body with 550mm paddles
- For canals/ rivers with a width ≥ 1650 mm and flow speed ~ 1.1 m/s



Dimensions and weight

	Length	Width (without/ withHandles deployed)	Height	Weight
Floating wide	2800mm	1750mm/2040mm	1590mm	97 kg
Floating narrow	2800mm	1550mm/1840mm	1590mm	92 kg
Standing wide	1785mm	1640mm/2040mm	1590mm	85 kg
Standing narrow	1785mm	1440mm/1840mm	1590mm	80 kg
Canal wide	1785mm	1640mm/2040mm	1500mm	80 kg
Canal narrow	1785mm	1440mm/1840mm	1500mm	75 kg

- Based on the data provided in your site feasibility form, we will advice you on the most suitable version for you
- All Versions will be supplied with standardized fasteners. Please refer to our assembly checklist to get an idea of what tools you require for the assembly of each version
- Every configuration will be provided with a suitable anchoring system

What are the technical details of the pump?

There are numerous factors that affect the performance of the pump such as speed of the river, cross-section of the river, the diameter of the delivery pipe, etc. Whereas we are working on a series of chart to illustrate the performance of the pump in different conditions, we currently still require your site specific parameters to accurately predict the performance of the pump in the site where you would like to implement the pump. Therefore, please contact our team so that we can send you a site-feasibility form that you can use to record the parameters of your site, based on which we can predict the performance of a certain configuration of our pump in your site.

What materials are used to produce the pump?

- In the current version of the pump main materials are plastic (Spiral), Aluminium alloy (Paddles andFrame), Stainless steel (connectors and anchor line) and high strength foam (Floaters).
- So far, we have not experienced that corrosion has disabled the our pump
- In future, more components will be made from plastic to decrease the risk of theft

What is the standard delivery pipe diameter?

1 inch or 1.25 inch. 1 inch for sites with a steep elevation. 1.25 inch for sites with longer horizontal distance. We can suggest a layout based on the site feasibility form.



What skills or tools are required to assemble and install a pump?

- The assembly of a pump can be divided in two phases
 1. Pre-Assembly
 2. Final Assembly & Installation
- Both assembly phases do not require special training, tools or skills to be completed
- An assembly manual will be provided that explains the assembly and installation of the pump step by step.
- aQysta can pre-assemble the pump in the Netherlands at an additional charge
- aQysta can carry out the final assembly and installation in the country of implementation, at an additional charge

How costly is the installation of a pump if I do it myself?

- The following cost elements have to be considered for the installation of the pump
 - » Transport of the pump to the location (Pick up)
 - » Purchase of tools if not available (See Assembly checklist for required tools)
 - » For the pre-assembly of the pump, 2 persons are required for a duration of 3 hours
 - » For the final assembly of the pump, 2 persons are required for a duration of 1 hour

How can I become a distributor for your pumps?

Please get in touch with our team if you are interested to become a distributor or contact us via viainfo@aqysta.com.

After an initial evaluation of your organization through a questionnaire, we will set up a Skype call to discuss the opportunities we see.



What maintenance does the pump need?

If the pump is properly installed, the need maintenance remains very low. The only needed maintenance typically includes:

- Cleaning the pump
- Removing leaves, branches or other debris that is stuck to the frame of the pump
- Over the long term, the following need for significant maintenance can be foreseen:
- Replacement of the rotary coupling seal (A replacement seal can be provided by aQysta)
- Replacement of the pillow block bearing (A pillow block bearing can be bought locally) So far, none of our pumps, which have been implemented around a year ago has required the replacement of a bearing or the rotary coupling seal.



What export packages will be used and what are their dimensions?

For single pumps, a pallet in combination with wrapping foil will be used. On demand, it is also possible to arrange for a customized wooden export box, at additional costs.

	Pre-assembled	Unassembled
Floating wide	150cm x 150cm x 180cm	150cm x 150cm x 70cm
Floating narrow	150cm x 130cm x 180cm	150cm x 150cm x 70cm
Standing wide	150cm x 150cm x 160cm	150cm x 150cm x 60cm
Standing narrow	150cm x 130cm x 160cm	150cm x 150cm x 60cm
Canal wide	150cm x 150cm x 100cm	150cm x 150cm x 60cm
Canal narrow	150cm x 150cm x 100cm	150cm x 150cm x 60cm

For higher order quantities, pumps will be packed in a container. A 20feet container fits 40 floating pumps (a 40ft container fits 80 floating pumps). Since the floats are very bulky, more pumps can be fitted the order consists mainly of standing or canal versions.

From where will the pumps be shipped?

- For air shipment from Amsterdam
- For sea shipment from Rotterdam or Antwerp, depending on what is more cost effective